

REASONS TO USE EASIFIX

Easy and speedy installation of straight (non fire rated) internal glass block walls.

GOLDEN RULES OF GLASS BLOCK INSTALLATION USING EASIFIX SYSTEM

- 1 Glass block walls are self supporting, but not load bearing.
- 2 For best integral strength, glass blocks should be installed into a four sided pre-prepared opening. This opening can be timber, brick, steel, concrete or blockwork.
- 3 Glass blocks expand and contract with temperature change.
- 4 Glass blocks should not be installed when the surrounding temperature is 5°C and falling or 30°C and rising.
- 5 Openings must be square and perpendicular and made to suit glass block modules. Glass blocks cannot be cut like masonry bricks or tiles.
- 6 A glass block panel should never be freestanding. To secure panel into opening using Easifix, stainless steel anchor brackets and horizontal Easifix spacer, every row acts as reinforcement.
- 7 Maximum panel size recommended when constructing with Easifix for internal use only up to 10m². (Vertical dimension not to exceed 3m).

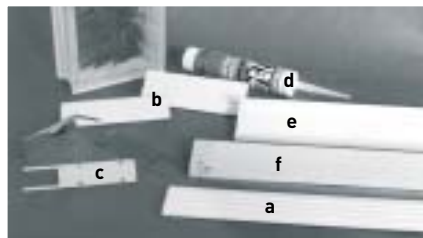
TOOLS REQUIRED

Drill or screwdriver, mitresaw or hacksaw, caulking gun, screws, pliers and spirit level.



ACCESSORIES REQUIRED

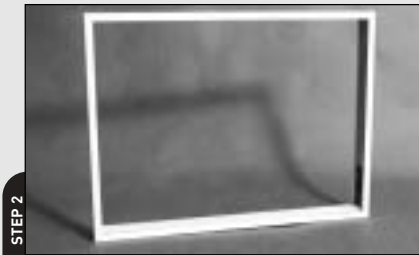
- (a) 2.4m (nominal) Easifix spacer profile;
- (b) 185mm Easifix spacer profile;
- (c) Stainless steel anchor brackets;
- (d) DC794 silicon;
- (e) Easifix sleeve;
- (f) Planed timber



PREPARATION OF OPENING



Cut 71 x 15mm planed timber and place into Easifix sleeve to create a neat finish. Mitre cut the corners of easifix sleeve.



Lay out blocks and Easifix spacers dry to ensure modules fit. Secure frame horizontally and vertically to surfaces at 600mm centres ensuring it is both square and perpendicular.

ANCHORING THE HORIZONTAL SPACER



Cut long length of easifix spacer fractionally shorter than the horizontal length of opening. Take two anchor brackets and bend prongs to a right angle using pliers. Insert prongs into holes of easifix spacer at each end.

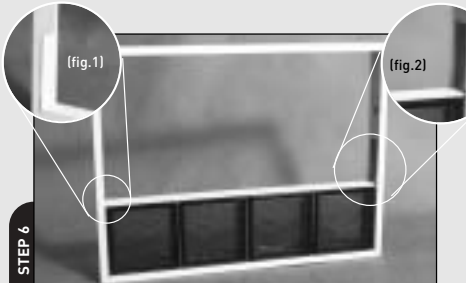


Silicon two 5mm beads of mastic into the under-side of the easifix spacer, fit to base of opening. Screw fix anchor brackets in place.

LAYING FIRST COURSE

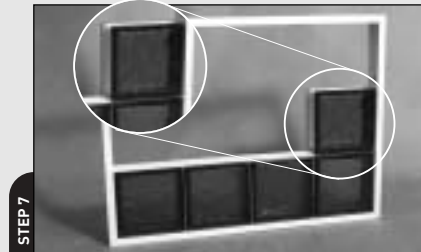


Take a 185mm length of spacer profile and silicon two beads of mastic on one side. Place over the anchor bracket. Silicon two beads of mastic to the easifix spacer profile. Fit first block. Take another piece of 185mm easifix, apply silicon and fit to exposed vertical of first block. Fit next block and repeat this process until first row is complete.



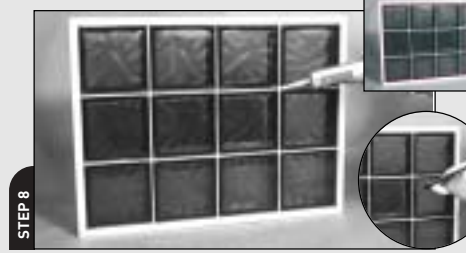
Note : Easifix spacer must always separate blocks from frame. (fig.1) Remember each row has to be secured with anchor brackets. (fig.2)

FINISHING THE GLASS BLOCK PANEL



Repeat previous steps to complete the next and following rows.

SEALING AND WEATHERPROOFING THE GLASS BLOCK PANEL



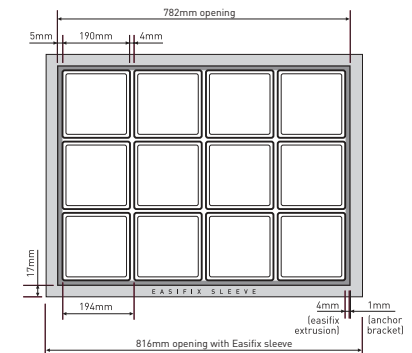
When the wall is complete, caulk the joints with silicon. Alternatively, grout using a wide grout joint.

CALCULATING OPENING SIZES

- Take the width of the block (eg. 190mm)
- Add the width of the vertical spacer joint (4mm)
- Multiply by the number of blocks in the horizontal/vertical course (eg 4 No.)
- Add one more joint width (6mm) as for 4 blocks you will have 5 joints
- The final joint dimension is 6mm. This allows for 5mm at one end (4mm spacer and 1mm anchor bracket) and 1mm to be added to the 4mm Easifix joint at the opposite end.

EXAMPLE 1: Using 10mm joints

190mm glass block :	190	EXAMPLE 2: Using Easifix sleeve	As Example 1 but add a further
4mm joint :	+ 4	17mm to each end (the	thickness of the sleeve) 782mm
Number of blocks :	x 4		+ (2 x 17mm)
	776	Opening size with	
Add fifth joint of 6mm:	6	Easifix sleeve:	816mm.
Opening size :	782mm		



INITIAL CLEAN AND AFTER CARE MAINTENANCE

Do not clean with any acidic products, the best product for cleaning is water. Polish each block with a soft cloth using good old elbow grease .

Note : Clean face of block as work proceeds.

The glass block installer should have left the glass block wall in a clean, unblemished condition.

Requiring only periodical cleaning to maintain an excellent appearance.

However, there may be a residue of cement on the glass surface left from mortar/tiling grout identified by whiteish bloom when dry. This may be removed by use of proprietary cement stain remover. (BAL HD Tar Cleaner)

HYDROFLUORIC ACID OR DERIVATIVES MUST NOT BE USED.

Paint or cement may be removed by a blade taking care not to scratch the surface of the glass. Periodic cleaning is required using clean water and buffing up with a chamois leather or in clean water use a proprietary glass cleaner and clean off with a lint free cloth.