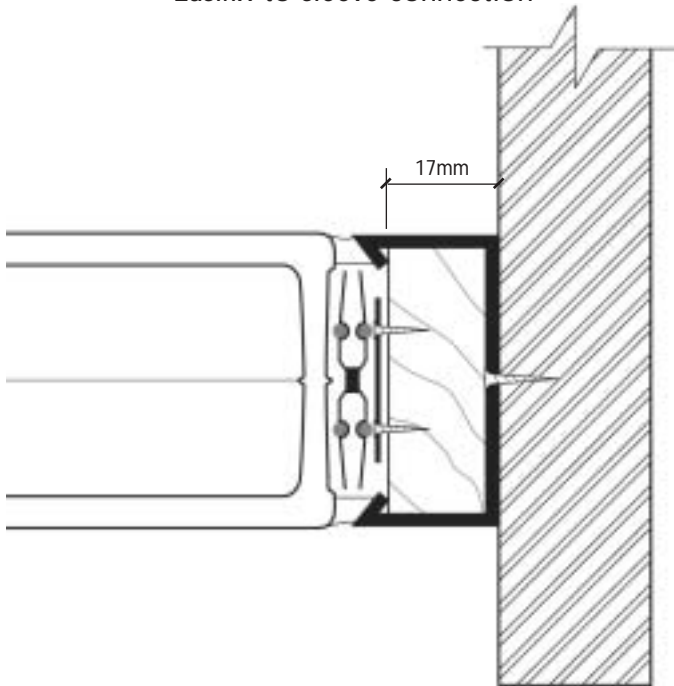
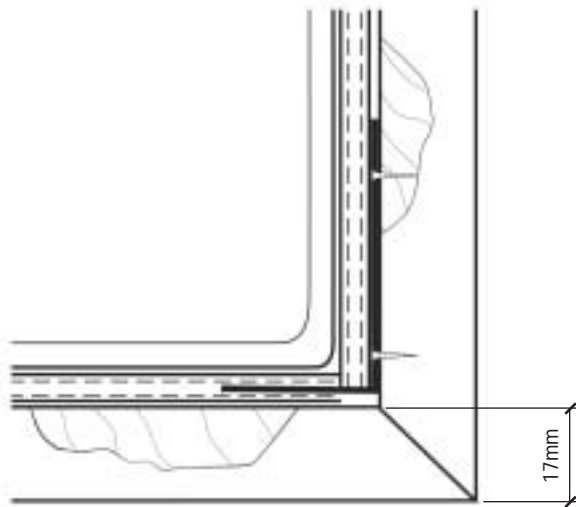


### Easifix to sleeve connection

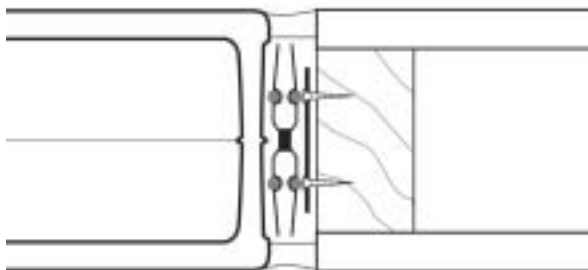


FOR FURTHER DETAILS SEE DRG GBT/0014

### Anchor Bracket Fixing Detail



### Easifix to timber stud with no sleeve



### Guide to Installation - Golden Rules

1. Glass block walls are self supporting, but not load bearing.
2. For best integral strength, glass blocks should be installed into a four sided pre-prepared opening. This opening can be timber, brick, steel, concrete or blockwork. The glass block panel is secured in place by being anchored into the head, cill and both jambs. An independent support is required above the head to eliminate downward pressure being placed on the glass block panel.
3. Glass blocks expand and contract with temperature change. Glass blocks should not be installed when the surrounding temperature is 5°C and falling or 30°C and rising. Expansion material must be incorporated to the perimeter opening.
4. Ensure all sides of opening are square and perpendicular and made to suit glass block modules. Glass blocks cannot be cut like masonry bricks or tiles.
5. A glass block panel should never be freestanding. Ideally for best integral strength - fitted into 4 sides. To secure panel into opening using Easifix, stainless steel anchor brackets and horizontal Easifix spacer, every row acts as reinforcement.
6. Maximum panel size :  
Easifix is recommended for internal use only up to 9m<sup>2</sup>.  
(Vertical dimension not to exceed 3m).
7. To calculate the minimum opening size based on using 190x190x80mm blocks with 4mm joints, multiply the number of blocks by 194mm (190mm block + 4mm joint) then add 6mm for the other easifix joint. This is the minimum opening requirement.
8. If an Easifix sleeve is used, allow a further 17mm around the perimeter.
9. All panels must be sealed with silicon mastic around the perimeter expansion joint to prevent moisture ingress and allow for expansion and contraction.  
Note : Do not bridge expansion material by pointing/ grouting over using mortar.

### Accessories

1. 2.4m (nominal) Easifix spacer profile
2. 185mm Easifix spacer profile
3. Easifix sleeve
4. Stainless steel anchor brackets
5. 71x15mm planed timber to suit Easifix sleeve
6. DC794 silicon sealant

**Glass Block Technology Limited,**  
170 Lodge Lane, Hyde, Cheshire SK14 4LB  
Tel : 0161 612 6893 Fax : 0161 285 1503

DRAWING TITLE :

**GUIDE TO INSTALLING GLASS BLOCKS USING  
EASIFIX SYSTEM (1)**

#### NOTES

1. Drawing not to scale. For information purposes only.

This drawing may not be reproduced or made use of unless expressly agreed by Glass Block Technology Limited.

DRAWING No.

**GBT/0011**