

GLASS BLOCK  
**SAFE WALL**  
SYSTEM



## SAFE WALL SYSTEM : END POST

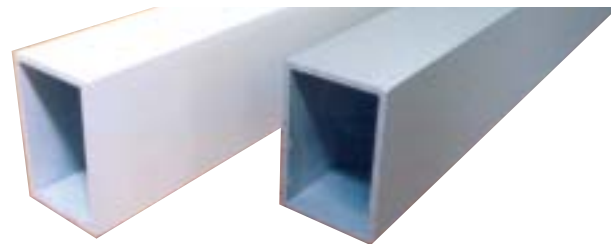
### END POST

The end post offers a solution for constructing glass block walls safely by creating a secondary vertical jamb. It is compatible with both Rods & Mortar and Easifix installation systems.



### SPECIFICATION

End posts are 2700mm long and can be cut to size on site to suit the floor to ceiling height. The end post is a 3" x 2" extruded aluminium box section, powder coated in either gloss white or metallic grey.



White & Metallic End Posts

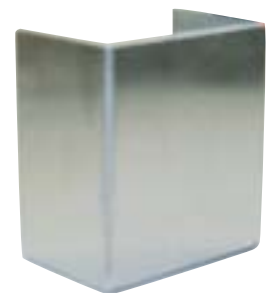
### HOW TO INSTALL AN END POST



The end post is secured in place by two specially fabricated boss sections, shown below, available in either brushed or polished stainless steel.



Polished End Boss

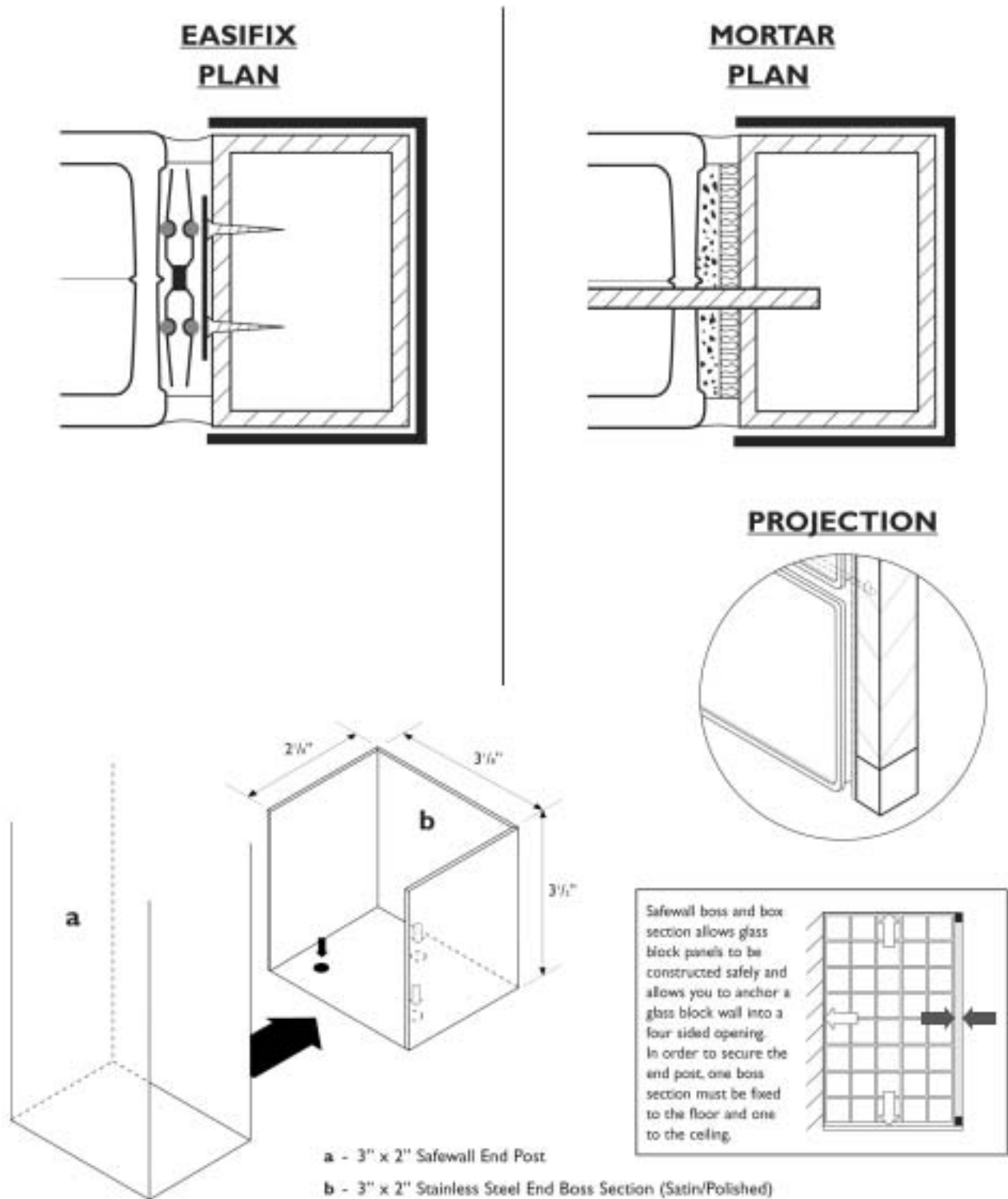


Satin End Boss  
(Brushed)

A boss section is secured to the floor and another is secured into the ceiling and then the end post is slid into place, until the panel is fully constructed the post can temporarily be held in place by siliconing inside the boss section.

### NOTE

End posts are recommended for internal use only, carry no fire rating, can only be used in conjunction with 80mm glass blocks and are suitable for use with either Rods & Mortar or Easifix systems.



Glass Block Technology data sheets can be downloaded as pdf files from [www.glassblocks.co.uk/datasheets](http://www.glassblocks.co.uk/datasheets)  
 If you require either faxed or posted versions, contact Glass Block Technology Sales.

# SAFE WALL SYSTEM : CORNER POST

## CORNER POST

The corner post offers a solution for constructing glass block walls around a 90° corner.



## SPECIFICATION

The corner post is 3" square and 2700mm long, can be cut down on site and is secured in place similarly to the end post, by two stainless steel boss sections.



White & Metallic End Posts

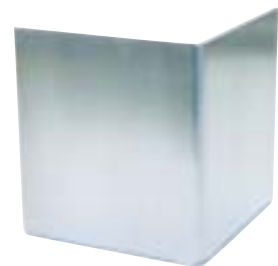
## HOW TO INSTALL A CORNER POST



The end post is secured in place by specially fabricated boss sections, shown below, available in either brushed or polished stainless steel.



Polished Corner Boss

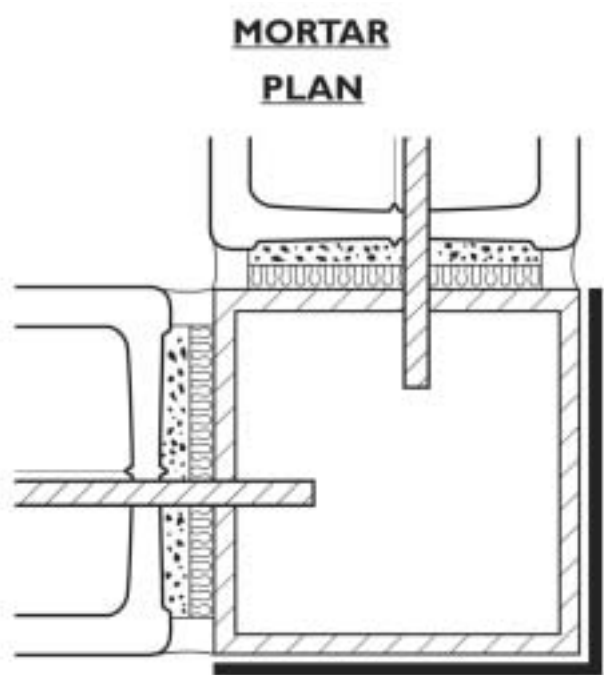
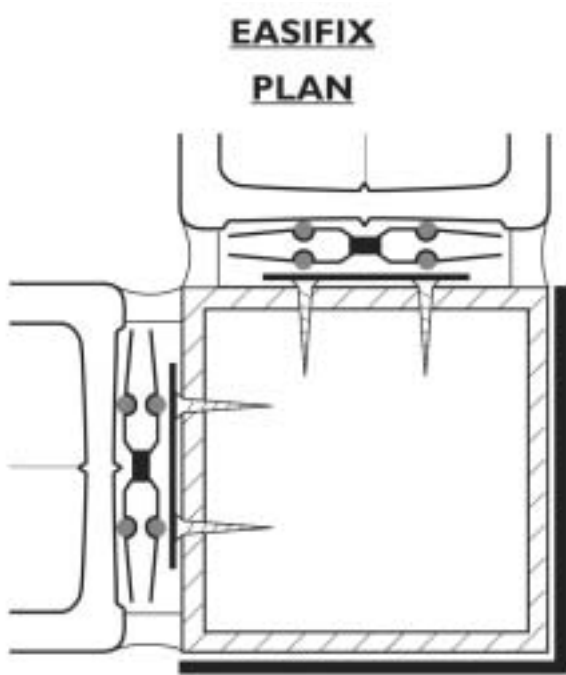


Satin Corner Boss (Brushed)

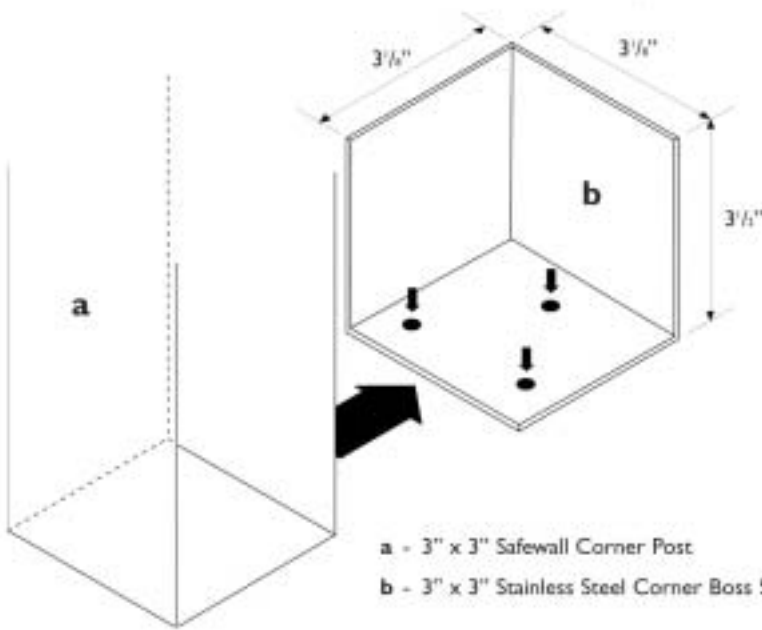
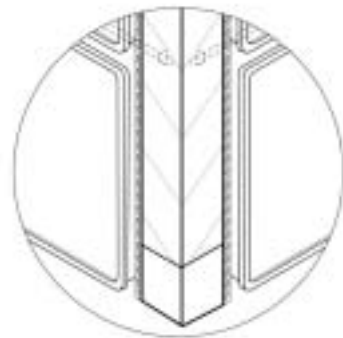
A corner boss section is secured to the floor and another is secured into the ceiling and then the corner post is slid into place, until the panel is fully constructed the post can temporarily be held in place by siliconging inside the boss section.

## NOTE

Corner posts are recommended for internal use only, carry no fire rating, can only be used in conjunction with 80mm glass blocks and are suitable for use with either Rods & Mortar or Easifix systems.

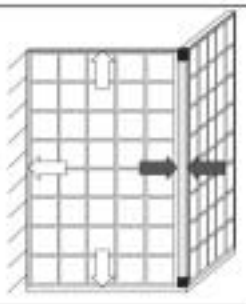


**PROJECTION**



a - 3" x 3" Safewall Corner Post  
 b - 3" x 3" Stainless Steel Corner Boss Section (Satin/Polished)

Safewall boss and box section allows glass block panels to be constructed safely and allows you to anchor a glass block wall into a four sided opening. In order to secure the corner post, one boss section must be fixed to the floor and one to the ceiling.



**CORNER POST TO CORNER BOSS DETAIL**

Glass Block Technology data sheets can be downloaded as pdf files from [www.glassblocks.co.uk/datasheets](http://www.glassblocks.co.uk/datasheets)  
 If you require either faxed or posted versions, contact Glass Block Technology Sales.





Shower Screen  
190x190x80 La Rochere Flemish Clear  
Silver Grey End Post/Polished Boss Sections



Shower Screen  
190x190x80 La Rochere Flemish Clear  
Silver Grey End Post/Polished Boss Sections



Architects Office  
190x190x80 Weck Turquoise Arctic  
Silver Grey End Post/Polished Boss Sections

All information is accurate to the best of our knowledge at time of going to press, however, colour images may vary slightly due to the photography, reproduction and printing process. Glass Block Technology Ltd cannot be held liable in any way regarding the usage of glass blocks and the manner in which they are installed.

Glass Block Technology reserve the right to amend or correct changes at any time.